



ASSEMBLY TOOLS AND SYSTEMS



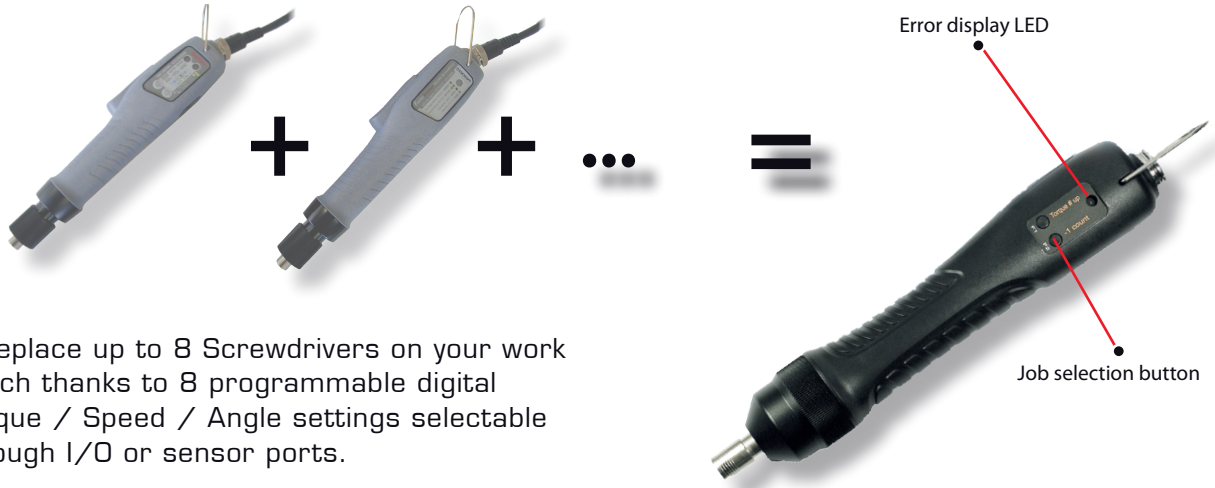
**Electric**  
Screwdrivers



# DC Controlled screwdrivers

## Torque Control System

A new way to optimize your tightening process



- Replace up to 8 Screwdrivers on your work bench thanks to 8 programmable digital Torque / Speed / Angle settings selectable through I/O or sensor ports.
- Set up to 8 counting programs with up to 20 screws each with different torque targets.

Best choice for Cell line Manufacturing



Easy PC Communication through USB Port



Screw counter inside (detect cross thread, screw omission...)



Tightening process management through 25P I/O port or sensor port



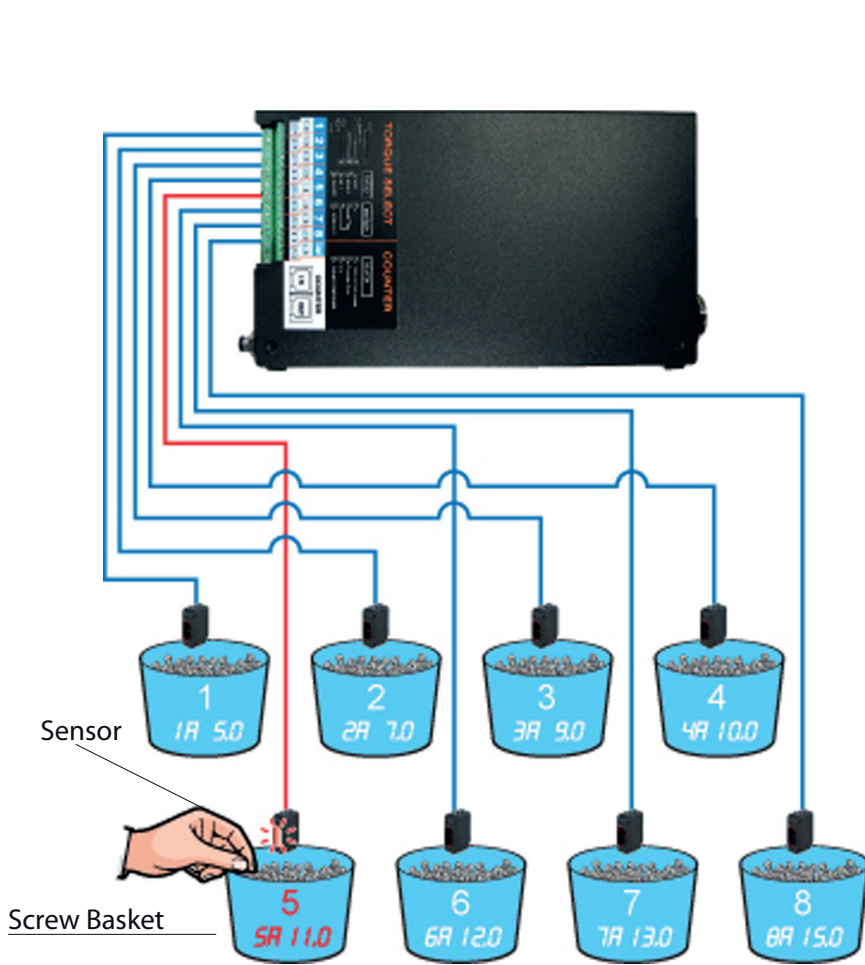
Built-in 32 Bit microprocessor



Data monitoring & Quality Control

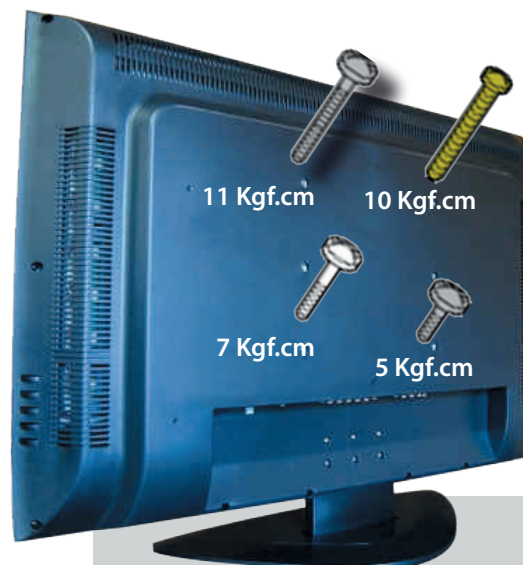
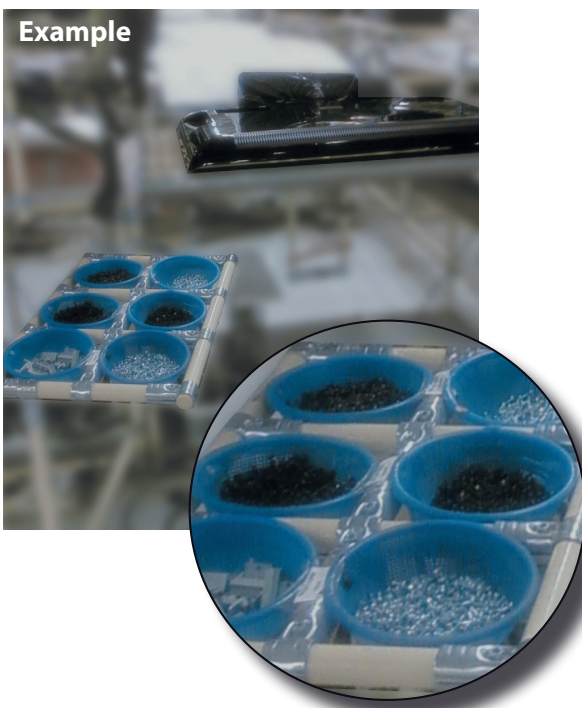


# Example of job selection through sensors



Job n° 5  
 Work Mode \_\_\_\_\_  
 Torque : 11 kgf.cm  
(Default setting is torque (kgf.cm))

- Until 8 jobs setup ( $\neq$  Torque / Speed / Angle)/
- Each job n° is simply selected by the sensor when the operator picks up the screw or by the PLC thanks to the 25 I/O ports.
- 8 counting programs with torque sequencing.



**8** different jobs with one Hybrid screw driver.

Jobs may be selected as well through PLC, socket tray...



# DC Controlled screwdrivers

HD Series 

0,25 to 4,4 NM



- Brushless DC motor (service free)
- ESD free by body grounding
- Torque repeatability ~ 7%
- Inside memory chip for tool data and recognition
- Built - in air clutch
- Angle monitoring
- Sequencing programs

**HD220A**

**HD150PA**

## 30 Volts Micro Torque hybrid screwdrivers

0,25 - 0,8 Nm

Model	Torque Range (Nm)	Speed rotation (rpm)	Drive	Starting system	Weight (Kg)	Code
HD080E	0,25 - 0,8	600 to 1100	Half moon/shank drive 4 mm	Remote	0,28	6-1042218

## 40 Volts hybrid screwdrivers

0,5 - 4,4 Nm

Model	Torque Range (Nm)	Speed rotation (rpm)	Drive	Starting system	Weight (Kg)	Code
HD150A	0,5 - 1,5	500 to 1800	Hex 1/4"	Lever	0,44	6-1042200
HD220A	0,7 - 2,2	400 to 1250	Hex 1/4"	Lever	0,44	6-1042201
HD450A	1,5 - 4,4	300 to 600	Hex 1/4"	Lever	0,51	6-1042208
HD150PA	0,5 - 1,5	500 to 1800	Hex 1/4"	Push to start	0,44	6-1042203
HD220PA	0,7 - 2,2	400 to 1250	Hex 1/4"	Push to start	0,44	6-1042204
HD450PA	1,5 - 4,4	300 to 600	Hex 1/4"	Push to start	0,51	6-1042209

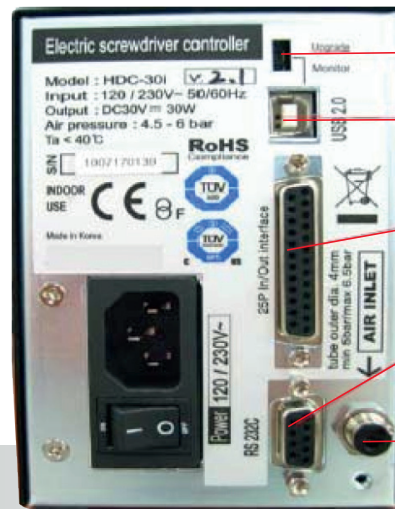
## 40 Volts hybrid spindles

0,5 - 4,4 Nm

Model	Torque Range (Nm)	Speed rotation (rpm)	Drive	Starting system	Weight (Kg)	Code
HDA150A	0,5 - 1,5	500 to 1800	Hex 1/4"	Remote	0,44	6-1042224
HDA220A	0,7 - 2,2	400 to 1250	Hex 1/4"	Remote	0,44	6-1042225
HDA450A	1,5 - 4,4	300 to 600	Hex 1/4"	Remote	0,51	6-1042226

Standard packing : screwdriver, 14P-3M cable, test bits.

# Controllers



- Com port usage selector
- USB Port for PC communication or firmware upgrade
- 25P I/O interface
- RS-232C Port
- Air pressure inlet (out dia 4 mm)

## HDC-40i

- Delivered with USB Com cable, installation CD, air filter, air hose.

No	ITEM	SPECIFICATION	
1	Model	HDC-40i - <b>6-1042211</b>	HDC-30i - <b>6-1042230</b>
2	Input	Electric	AC120VC or AC220V, 50~60 Hz
3		Air pressure	Min 5 bar/Max 6,5 bar
4	Output	Electric	DC40V, 3A
5	Fuse		AC250V, 10A
6	Dimension/Weight	97(w) 222(d) 129(h) mm / 2,1kg	87(w) 121(d) 129(h) mm / 1,6kg
7	Job parameters	Torque, Speed, Angle, Soft start, Torque tuning in 8 preset numbers	
8	Job selection	1) Front panel button 2) 25P I/O interface 3) F1 button on the driver	
9	Torque Calibration	From - 20% to +20%	
10	Auto detection of the connected Driver	Auto detection of the offset value from the EEP-rom inside the driver	
11	Error display	Error display by code no. in system, communication & pattern error group	
12	Fastening quality control	OK/NG monitoring of screw fastening by preset pattern of angles, times	
13	Screw Counter	Save the total screw number, and monitor the number of OK fastenings.	
14	Monitoring and parameter	Monitoring and parameter settings on PC program (MS Windows base)	
15	Communication port	USB or RS232C (option)	
16	Built in counter program	8 counting programs, 20 screws per program. Auto-sequencing of fastening strategies.	

## Accessories



Standard :



Option :



Driver Cable 14p 3M

**Code : 6-1042205** (HD-40 Volts)  
(delivered with the tool)  
**Code : 6-1044700**(HD-30 Volts)  
(delivered with the tool)

USB Com Cable

**Code : 6-1042206**  
(delivered with the controller)

Pistol Grip

**Code : 6-1042210**



# DC Controlled screwdrivers

SD Series 

0,016 to 0,6 NM



- 24V Swiss DC Servo motor
- Over 5 millions cycles of life expectancy
- Torque accuracy 10 % in full scale
- Torque repeatability  $\pm 3\%$
- 190 - 1000 rpm Speed control (scale : 50 rpm)
- 8 programs memory
- Real time monitoring - torque, rpm, angle
- ESD free with conductive material
- Suitable for clean room
- Real time torque and angle curve

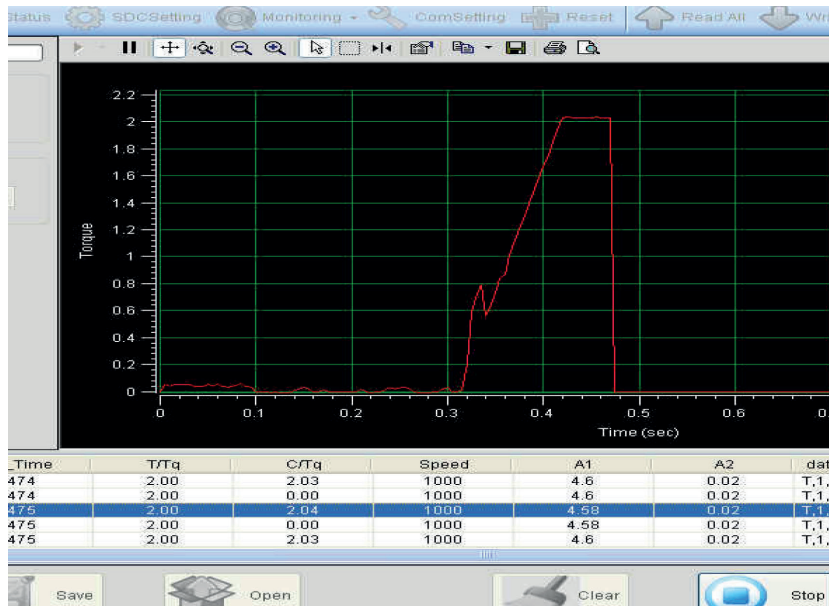
Model	Starting system	Torque Range (Nm)	Speed Rotation (rpm)	Drive	Weight (Kg)	Controller	Code
SD 120 Z	Remote	0,016 - 0,15	240 to 1000	Half-moon 4 mm		SDC-24	6-1000235
SD 200 Z	Remote	0,05 - 0,2	420 to 1000	Half-moon 4 mm		SDC-24	6-1000236
SD 300 Z	Remote	0,1 - 0,3	360 to 890	Half-moon 4 mm		SDC-24	6-1000237
SDA 120	Remote	0,016 - 0,15	240 to 1000	Half-moon 4 mm		SDC-24	6-1000238
SDA 200	Remote	0,05 - 0,2	420 to 1000	Half-moon 4 mm		SDC-24	6-1000239
SDA 300	Remote	0,1 - 0,3	360 to 890	Half-moon 4 mm		SDC-24	6-1000240
SD 120	Lever	0,016 - 0,15	240 to 1000	Half-moon 4 mm	0,26	SDC-24	6-1000241
SD 200	Lever	0,05 - 0,2	420 to 1000	Half-moon 4 mm	0,3	SDC-24	6-1000242
SD 300	Lever	0,1 - 0,3	360 to 890	Half-moon 4 mm	0,3	SDC-24	6-1000243
SD 600	Lever	0,15 - 0,6	190 to 710	Half-moon 4 mm	0,34	SDC-24	6-1000244

Z : fixtured spindle with Offset

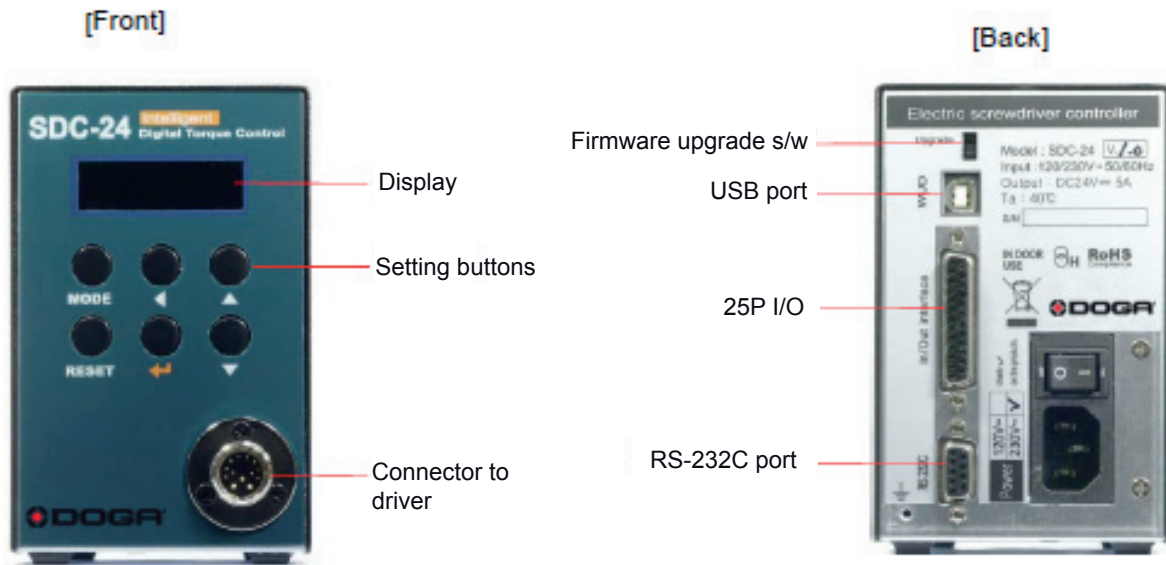
SDA : fixtured spindle

SD : hand held, lever start

## Real time torque & angle curve



# Controller



SDC 24 Controller : Code 6-1000245

no	Item	Specification	
1	Input	AC120VC or AC220V, 50~60Hz	
2	Output	DC24V, 5A	
3	Control Range	Torque	0.1 ~ 15.0 Kgf.cm
		Speed	100 - 1,000 rpm
		Angle	0.4° step
4	Preset parameters	Torque, (Speed) & Angle	
5	Preset # selecting	1) Front panel button 2) 25P I/O interface	
6	Torque calibration	- 10% ~ +10%	
7	Auto recognition	Auto detection of connected driver when power ON of controller	
8	Error display	Error code display ( 3 groups )	
9	Fastening quality control	Fastening data verification (NG/OK) against the pre-setting pattern of angle.	
10	Screw Counter	Total 8 programs of tightening screw number and sequence	
11	Parameter setting and monitoring	MS Windows PC software, Smart-Manager or front panel	

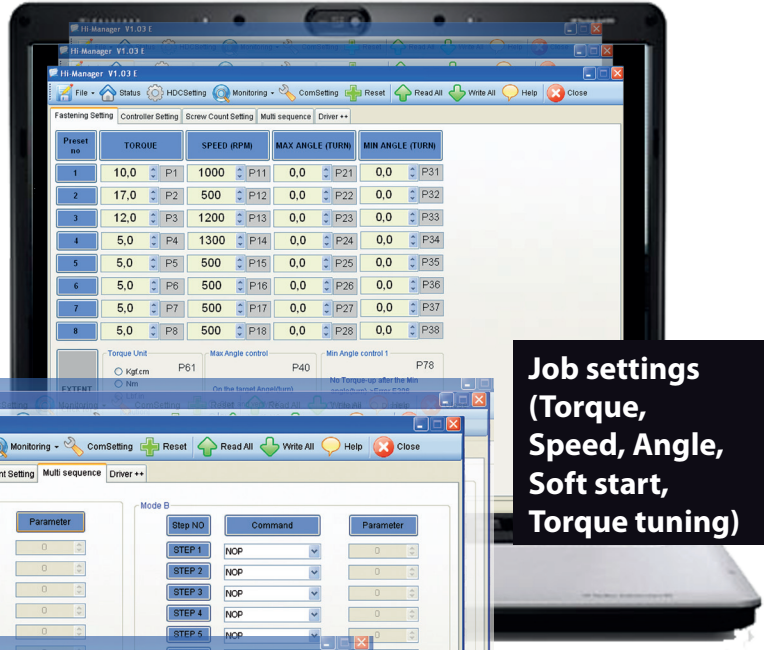
ACCESSORIES : (delivered with the controller)  
 - Driver cable SD 10 PC, 3 M Code : 6-1074440  
 - USB com cable Code : 6-1042206



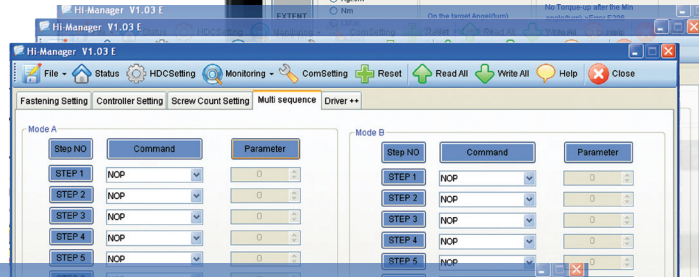
# Software

Smart Manager (SD Series)/Hi-Manager (HD Series)

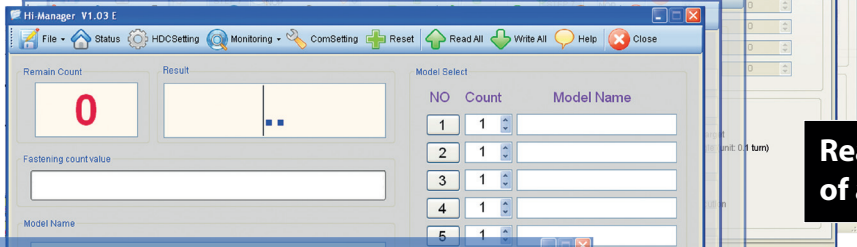
## Set and monitor your tool, your tightening environment on free PC Software,



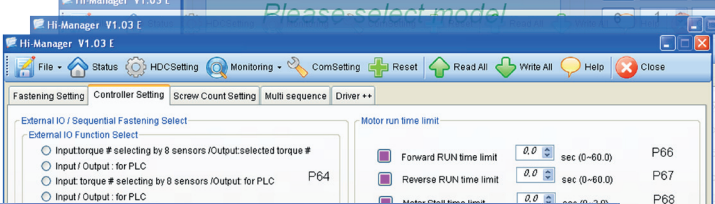
**Job settings (Torque, Speed, Angle, Soft start, Torque tuning)**



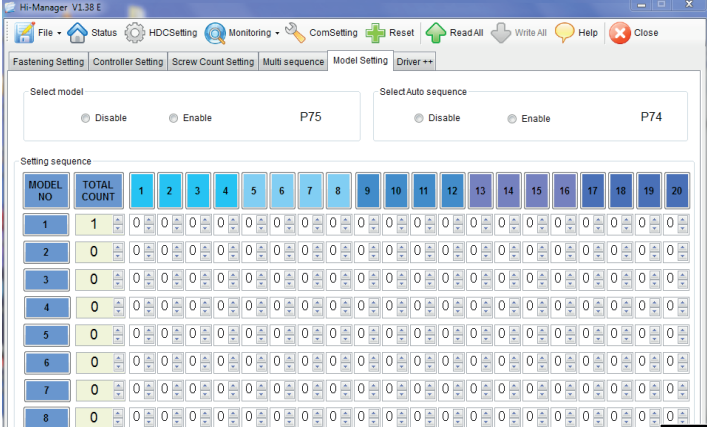
**Real time readings of all tightenings**



**Screw counter process Monitoring**



**Error Monitoring**

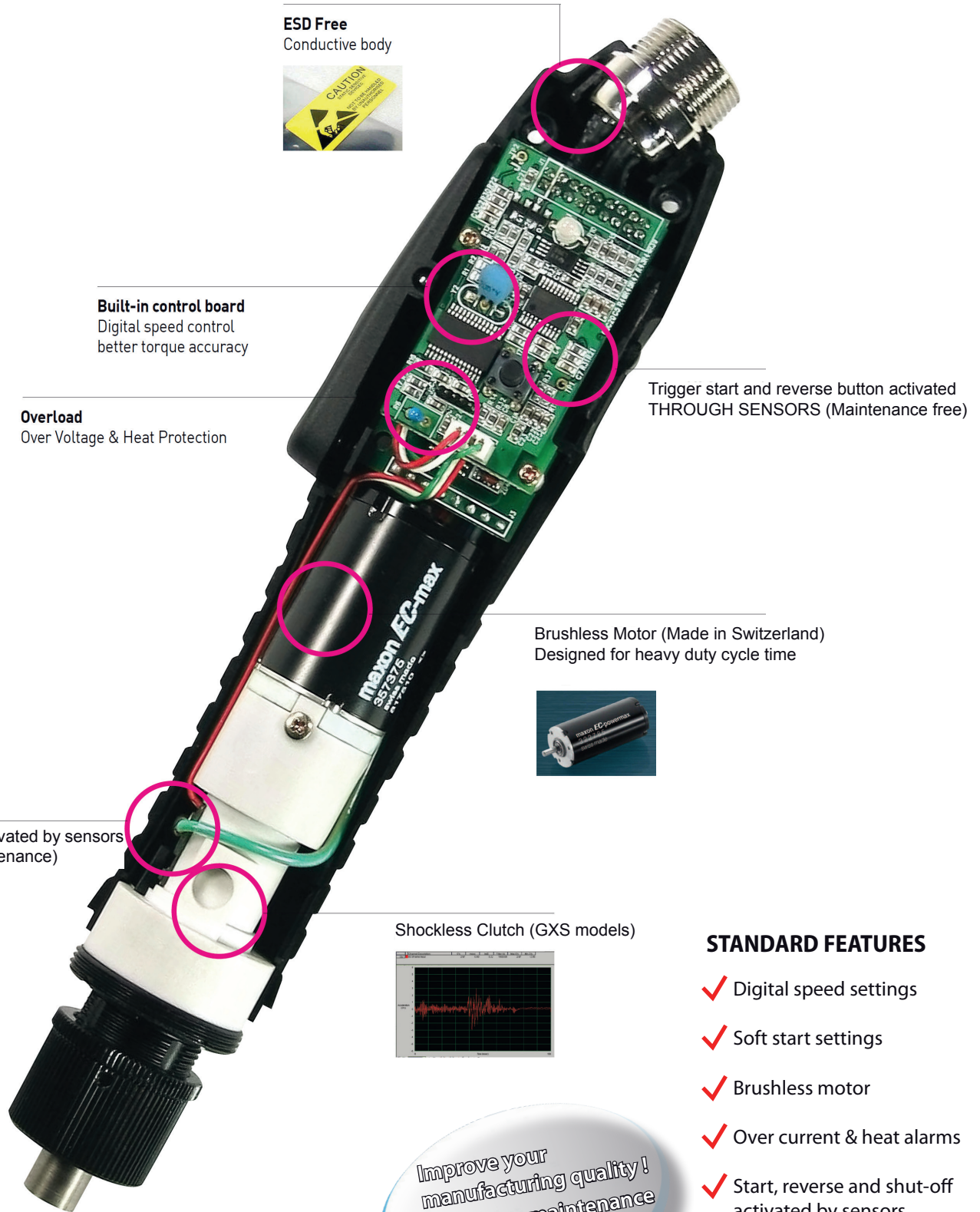


**Built-in counting program with torque sequencing**



# GX Series

## Brushless



**ESD Free**  
Conductive body



**Built-in control board**  
Digital speed control  
better torque accuracy

**Overload**  
Over Voltage & Heat Protection

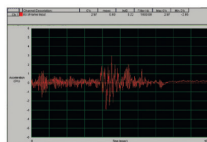
Trigger start and reverse button activated  
THROUGH SENSORS (Maintenance free)

Brushless Motor (Made in Switzerland)  
Designed for heavy duty cycle time



Clutch activated by sensors  
(No maintenance)

Shockless Clutch (GXS models)



### STANDARD FEATURES

- ✓ Digital speed settings
- ✓ Soft start settings
- ✓ Brushless motor
- ✓ Over current & heat alarms
- ✓ Start, reverse and shut-off activated by sensors

Improve your  
manufacturing quality!  
Lower your maintenance  
cost!



# GX Series

30 Volts • Auto-shut off • CE • XS-40D Controller 

0,02 to 1,2 NM



VACCUM System (Optional) • 

- Higher productivity : thanks to high Brushless motor efficiency !
- Higher comfort : thanks to improved ergonomoy and reduced sound level and heat !
- Increased economy : thanks to brushless motor (triple the life time of the motor).
- Reduced maintenance : the best Mean Time Between Failure (MTBF) ever reached until now (no carbon brush, trigger and reverse contactless switches, over-heat and over-current built in alarms protecting the screwdrivers).
- Increased production quality : thanks to ESD protection, accurate clutch and Softstop clutch Mechanism.
- Noise level : <70 dBA, vibration level : <2,5 m/s<sup>2</sup>

## Micro Torque GX Series *(features SOFT STOP clutch and Digital speed setting)*

Model	Torque Range (Nm)	Speed rotation (rpm)	Starting system	Drive	Weight (Kg)	Code
GX 035 ESD	0,02 - 0,34	300 to 1100	Lever	Half moon/shank drive 4mm	0,24	6-1040077
GX 045 ESD	0,04 - 0,45	300 to 700	Lever	Half moon/shank drive 4mm	0,24	6-1040078

## STANDARD Series : GX with digital speed and soft start

Model	Torque Range (Nm)	Speed rotation (rpm)	Starting system	Drive	Weight (Kg)	Code
GX 80 ESD V2	0,09 - 0,8	450 to 1000	Lever	Hex 1/4"	0,35	6-1021025
GX 120 ESD V2	0,2 - 1,2	300 to 700	Lever	Hex 1/4"	0,35	6-1021026
GX 80 P ESD V2	0,09 - 0,8	450 to 1000	Push to start	Hex 1/4"	0,35	6-1021027
GX 120 P ESD V2	0,2 - 1,2	300 to 700	Push to start	Hex 1/4"	0,35	6-1021028

## SOFT STOP Series : GXS *(built-in special clutch mechanism providing soft shut-off to protect fragile parts)*

Model	Torque Range (Nm)	Speed rotation (rpm)	Starting system	Drive	Weight (Kg)	Code
GXS 80 ESD V2	0,09 - 0,8	450 to 1000	Lever	Hex 1/4"	0,35	6-1021020
GXS 120 ESD V2	0,2 - 1,2	300 to 700	Lever	Hex 1/4"	0,35	6-1021021

## TIMER & AUTOREVERSE Series : GXT *(fasten at preset angle/time, Automatic Reverse/forward, stop sequence - ideal for tapping operation, helicoil fastening, pre-assembly...)*

Model	Torque Range (Nm)	Speed rotation (rpm)	Starting system	Drive	Weight (Kg)	Code
GXT 80 ESD V2	0,09 - 0,8	450 to 1000	Lever	Hex 1/4"	0,35	6-1021036
GXT 120 ESD V2	0,2 - 1,2	300 to 700	Lever	Hex 1/4"	0,35	6-1021037

## FIXTURED SPINDLES Series : GXA *(for automation)*

Model	Torque Range (Nm)	Speed rotation (rpm)	Starting system	Drive	Weight (Kg)	Code
GXA 035 ESD V3	0,03 - 0,35	300 to 1100	Remote	Half moon/shank drive 4mm	0,45	6-1040073
GXA 045 ESD V3	0,04 - 0,45	300 to 700	Remote	Half moon/shank drive 4mm	0,45	6-1040076
GXA 080 ESD V3	0,1 - 0,8	450 to 1000	Remote	Hex 1/4"	0,45	6-1040074
GXA 120 ESD V3	0,2 - 1,2	300 to 700	Remote	Hex 1/4"	0,45	6-1040075

# GX Series

40 Volts • Auto-shut off • CE • XS-40D Controller 

0,3 to 4,4 NM



- Higher productivity : thanks to high Brushless motor efficiency !
- Higher comfort : thanks to improved ergonomoy and reduced sound level and heat !
- Increased economy : thanks to brushless motor (triple the life time of the motor).
- Reduced maintenance : the best Mean Time Between Failure (MTBF) ever reached until now (no carbon brush, trigger and reverse contactless switches, over-heat and over-current built in alarms protecting the screwdrivers).
- Increased production quality : thanks to ESD protection, accurate clutch and Softstop clutch Mechanism.
- Noise level : <70 dBA, vibration level : <2,5 m/s<sup>2</sup>

## STANDARD Series : GX with digital speed setting and soft start

Model	Torque Range (Nm)	Speed rotation (rpm)	Starting system	Drive	Weight (Kg)	Code
GX 150 ESD	0,3 - 1,47	800 to 1700	Lever	Hex 1/4"	0,52	6-1027422
GX 220 ESD	0,6 - 2,15	600 to 1200	Lever	Hex 1/4"	0,52	6-1027423
GX 450 ESD	1 - 4,41	300 to 600	Lever	Hex 1/4"	0,52	6-1027424
GX 150 P ESD	0,3 - 1,47	800 to 1700	Push to Start	Hex 1/4"	0,52	6-1027425
GX 220 P ESD	0,6 - 2,15	600 to 1200	Push to Start	Hex 1/4"	0,52	6-1027426
GX 450 P ESD	1 - 4,41	300 to 600	Push to Start	Hex 1/4"	0,52	6-1027427

## SOFT STOP Series : GXS (built-in special clutch mechanism providing soft shut-off to protect fragile parts)

Model	Torque Range (Nm)	Speed rotation (rpm)	Starting system	Drive	Weight (Kg)	Code
GXS 150 ESD	0,3 - 1,47	800 to 1700	Lever	Hex 1/4"	0,52	6-1077410
GXS 220 ESD	0,6 - 2,15	600 to 1200	Lever	Hex 1/4"	0,52	6-1077411
GXS 150 P ESD	0,3 - 1,47	800 to 1700	Push to Start	Hex 1/4"	0,52	6-1077412
GXS 220 P ESD	0,6 - 2,15	600 to 1200	Push to Start	Hex 1/4"	0,52	6-1077413

## TIMER & AUTOREVERSE Series : GXT (fasten at preset angle/time, Automatic Reverse/forward stop sequence - ideal for tapping operation, helicoil fastening, pre-assembly...)

Model	Torque Range (Nm)	Speed rotation (rpm)	Starting system	Drive	Weight (Kg)	Code
GXT 150 ESD	0,3 - 1,47	800 to 1700	Lever	Hex 1/4"	0,52	6-1075304
GXT 220 ESD	0,6 - 2,15	600 to 1200	Lever	Hex 1/4"	0,52	6-1075305
GXT 450 ESD	1 - 4,41	300 to 600	Lever	Hex 1/4"	0,52	6-1075306

## FIXTURED SPINDLE FOR AUTOMATION (automatic spindle with remote start)

Model	Torque Range (Nm)	Speed rotation (rpm)	Starting system	Drive	Weight (Kg)	Code
GXA 150 ESD V2	0,3 - 1,47	800 to 1700	Remote	Hex 1/4"	0,8	6-1040070
GXA 220 ESD V2	0,6 - 2,15	600 to 1200	Remote	Hex 1/4"	0,8	6-1040071
GXA 450 ESD V2	1 - 4,41	300 to 600	Remote	Hex 1/4"	0,8	6-1040072



# GY Series

35 Volts • CE • XT-35D Controller 

0,7 to 9,8 NM

- Excellent ratio Weight / Ergonomy / Power
- BLDC motor (maintenance free)
- High speed from 300 to 1700 rpm (3 models)
- Designed for high production rate
- Motor efficiency 85%
- Low Noise, Low Heat, less Energy consumption
- Over Heat, Over Load, Over Voltage protection circuit with LED display
- ESD free with conductive plastic body (less than 10000 hms)
- Noise level : <70 dBA, vibration level : <2,5 m/s<sup>2</sup>



Model	Torque Range (Nm)	Speed Rotation (rpm)	Starting system	Drive	Weight (Kg)	Code
GY 30	0,7 - 2,94	500 to 1500	Lever	Hex 1/4"	0,7	6-1077450
GY 45	1 - 4,41	500 to 1000	Lever	Hex 1/4"	0,7	6-1077452
GY 90	1 - 8,83	300 to 550	Lever	Hex 1/4"	0,75	6-1077454
GY 30 P	0,7 - 2,94	500 to 1500	Push to start	Hex 1/4"	0,7	6-1077451
GY 45 P	1 - 4,41	500 to 1000	Push to start	Hex 1/4"	0,7	6-1077453
GYA 35	0,7 - 3,4	500 to 1500	Remote start	Hex 1/4"	0,9	6-1077455
GYA 50	1 - 4,9	500 to 1000	Remote start	Hex 1/4"	0,9	6-1077456
GYA 100	1 - 9,8	150 to 550	Remote start	Hex 1/4"	0,9	6-1077457
PGY 35 pistol	0,7 - 3,4	500 to 1500	Trigger	Hex 1/4"	0,82	6-1077430
PGY 50 pistol	1 - 4,9	500 to 1000	Trigger	Hex 1/4"	0,82	6-1077431
PGY 100 pistol	1,5 - 9,8	150 to 550	Trigger	Hex 1/4"	0,86	6-1077432
PGY 35 T pistol Top Exit	0,7 - 3,4	500 to 1500	Trigger	Hex 1/4"	0,82	6-1077433
PGY 50 T pistol Top Exit	1 - 4,9	500 to 1000	Trigger	Hex 1/4"	0,82	6-1077434
PGY 100 T pistol Top Exit	1,5 - 9,8	150 to 550	Trigger	Hex 1/4"	0,86	6-1077435

# GX FS... Series

30 VDC High Speed • CE • XS-40D Controller 

0,4 to 1,8 NM

- Excellent Ergonomy (smart and small sized)
- BLDC motor (maintenance free)
- High speed from 680 - 1550 rpm (4 models)
- Motor efficiency 85%
- Low Noise, Low Heat level
- Over Heat, Over Load, Over Voltage protection circuit with LED display
- ESD free with conductive plastic body (less than 10000 hms)
- Noise level : <70 dBA, vibration level : <2,5 m/s<sup>2</sup>



Model	Torque Range (Nm)	Speed Rotation (rpm)	Starting system	Drive	Weight (Kg)	Code
GX60 FS ESD	0,1 - 0,60	1550	Lever	Hex 1/4"	0,44	6-1055960
GX80 FS ESD	0,2 - 0,80	1250	Lever	Hex 1/4"	0,44	6-1055962
GX120 FS ESD	0,3 - 1,20	1000	Lever	Hex 1/4"	0,44	6-1055964
GX180 FS ESD	0,4 - 1,80	700	Lever	Hex 1/4"	0,44	6-1055966
GX60FSP ESD	0,1 - 0,60	1550	Push to start	Hex 1/4"	0,44	6-1055961
GX80FSP ESD	0,2 - 0,80	1250	Push to start	Hex 1/4"	0,44	6-1055963
GX120FSP ESD	0,3 - 1,20	1000	Push to start	Hex 1/4"	0,44	6-1055965
GX180FSP ESD	0,4 - 1,80	700	Push to start	Hex 1/4"	0,44	6-1055967

# GX...BT Series

35 Volts • High Torque/Speed with Built-in speed and soft start selector • CE • XS-35D Controller 

1 to 9,8 NM

- Built Electronics with Embedded Speed and soft start settings
- BLDC motor (maintenance free)
- Low Noise, Low Heat, less Energy consumption
- Overt Heat, Over Load, Over Voltage protection circuit with LED display
- ESD free through bit socket grounded
- Noise level : <70 dBA, vibration level : <2,5 m/s<sup>2</sup>




Model	Torque Range (Nm)	Speed Rotation (rpm)	Starting system	Drive	Weight (Kg)	Code
GX 35 BT	1 - 3,4	700 to 1500	Lever	Hex 1/4"	0,9	6-1077460
GX 50 BT	2 - 4,9	600 to 1050	Lever	Hex 1/4"	0,9	6-1077461
GX 100 BT	4 - 9,8	150 to 550	Lever	Hex 1/4"	0,9	6-1077462



# Accessories

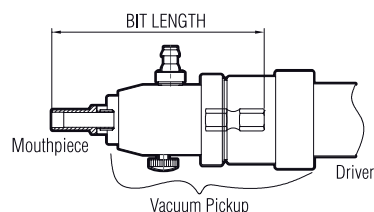
For GX Series

## Screw Vacuum Pickup






	
Vacuum pick up	
Code	6-1041214 (for GX 30 Volts)
Code	6-1000225 (for GX 40 Volts)

Vacuum pick up assembly is provided without the sleeve (on request).

The recommended bit length is 44 mm.  
Thread size : 4mm.



## Accessories

			
Designation	Torque ring cover	Ring for arm mounting for GX (30 Volts) only	Spiral cable 3,5 m
Code	6-1041213 (for GX 30 Volts) 6-1041205 (for GX 40 Volts) 6-1000232 (for GX035-045) 6-1000233 (for GX...BT, GY, GYP) 6-1041212 (for GX...FS)	6-1041501	6-1010413
			
Designation	Lock key*	Lock key firmware upgrade*	Pistol grip for 40 Volts
Code	6-1044850	6-1000222	6-1010420
			
		Cable 5 m (GY-PGY) 6-1078888	Angle head for 30 Volts 6-1000220 Angle head for 40 Volts 6-1000221 Angle head for GX...BT, GY 6-1000234**

\* Available only for standard series GX 30 & 40 Volts.

\*\* Require additional housing nut 6-1033200 (for GX...BT, PGY)  
6-1033201 (GY)

## PLC Interface

	
PLC interface U-3B	
Code	6-1041520

- Model U-3B
- Weight : 75g
- Size : 75(W) x 61(D) x 20(H)mm
- Type of signals :
  - open collector by optocoupler (reversed)
  - relay contact N.C
  - Relay contact N.O

Converted signals by U-3B converter from XS-40D

N°	Wire Color	Signal	XS-38D	Interface converter
1	ORANGE	Spare		
2	ORANGE STRIPE	Torque Up		
3	BLUE	Motor Run		
4	BLUE STRIPE	Common for 2&3 wire		
5	GREEN	Driver Lock		
6	GREEN STRIPE			
7	BROWN	No use		
8	BROWN STRIPE	Spare		

# DO Series

Torque range • Auto-shut off • CE • XS-38D Controller 

0,2 to 4,41 NM



- designed for operator comfort : light weight and small sized, full ergonomic design
- designed for productivity : Robust and durable - Suitable with high production rate, Accurate shut-off clutch (+/- 3%), speed control, maintenance free (shut-off operated by magnetic sensor - no wearing)
- designed for quality : ESD free, External torque adjustment scale
- Noise level : <70 dBA, vibration level : <2,5 m/s<sup>2</sup>

## DO Series

Model	Torque range (Nm)	Rotation speed (rpm)	Starting system	Drive	Weight (Kg)	Code
DO 250 ESD	0,2 - 2,45	630 or 1050	Lever	Hex 1/4"	0,72	6-1040036
DO 350 ESD	0,2 - 3,43	460 or 750	Lever	Hex 1/4"	0,72	6-1040037
DO 450 ESD	0,3 - 4,41	330 or 550	Lever	Hex 1/4"	0,72	6-1040038
DO 250 P ESD	0,2 - 2,45	630 or 1050	Push to Start	Hex 1/4"	0,72	6-1040040
DO 350 P ESD	0,2 - 3,43	460 or 750	Push to Start	Hex 1/4"	0,72	6-1040041
DO 450 P ESD	0,3 - 4,41	330 or 550	Push to Start	Hex 1/4"	0,72	6-1040042

## Standard equipment (supplied with the tool)

- Power supply cable 3 m
- 2 carbon brushes
- 2 bits Philips n° 0, n° 1
- Clutch adjustment springs
- Suspension ring
- User manual

## Accessories & Wear spare parts

							
Designation	Carbon brush	Brush cap	Torque ring cover	Ring for arm mounting	Extra long cable 5 m	Spiral cable 3,5 m	Pistol Grip Kit
Code	6-1041220	6-1041203	6-1041211	6-1041502	6-1044703	6-1010413	6-1010412



# GA Series

Torque range • Auto-shut off •  $\text{C}\epsilon$  • XS-38D Controller 

0,08 to 1,18 NM



- designed for operator comfort : light weight and small sized, full ergonomic design
- designed for productivity : Accurate shut-off clutch (+/- 3%), speed control, maintenance free (shut-off operated by magnetic sensor - no wearing)
- designed for quality : ESD free, External torque adjustment scale, soft start, double hit mode.
- Noise level : <70 dBA, vibration level : <2,5 m/s<sup>2</sup>

## GA Series

Model	Torque range (Nm)	Rotation speed (rpm)	Drive	Starting system	Weight (Kg)	Code
GA 150 ESD	0,08 - 0,78	700 or 1000*	Hex 1/4"	Lever	0,31	6-1040011
GA 180 ESD	0,1 - 1,18	450 or 700*	Hex 1/4"	Lever	0,31	6-1040012
GA 150 P ESD	0,08 - 0,78	700 or 1000*	Hex 1/4"	Push to start	0,31	6-1040013
GA 180 P ESD	0,1 - 1,18	450 or 700*	Hex 1/4"	Push to start	0,31	6-1040014

\* Speed selection is available only with XS-38D.

## Standard equipment (supplied with the tool)

- Power supply cable 3 m
- 2 carbon brushes
- 2 bits Philips n° 0, n° 1
- Clutch adjustment springs
- Suspension ring
- User manual

## Accessories & Wear spare parts

							
Designation	Carbon brush	Brush cap	Torque ring cover	Ring for arm mounting	Extra long cable 5 m	Spiral cable 3,5 m	Screw vacuum Pick-up
Code	6-1041219	6-1041203	6-1041212	6-1041500	6-1044703	6-1010413	6-1041214

Vacuum pick up assembly is provided without the sleeve (on request). The recommended bit length is 44 mm long. Feeting size : diameter 4 mm.



# Controllers

**SMPS Technology Inside!**



- High productivity : Thanks to the unique SMPS technology (switching modulation), the connected screwdriver always delivers constant rotation speed and fastening force even for demanding fastening process (self-tapping tightening, soft joint....).
- Comfort : Light and compact.
- Durability : Built-in Over heat and Over Current protection prevent the screwdriver from damage or bad use.
- Economy : Maintenance free.
- Quality : Easy monitoring of your fastenings thanks to torque reached signal output, start and stop signal outputs, selectable softstart, Screwdriver lock signal input for PLC (prevents screwdrivers activation until PLC input signal).

Model	Power (AC) (V)	Output voltage low (V)	Output voltage high (V)	Rated output (A)	Weight (Kg)	Size (mm)	For screwdrivers 30 and 40 Volts	Code
XS-40D	220	30	40	3	0,86	90x150x55	GX, GX...FS Series	6-1040065
XS-40D FA	220	30	40	3	0,86	90x150x55	GXA Series	6-1040080

**SMPS Technology Inside!**



- High productivity : Thanks to the unique SMPS technology (switching modulation), the connected screwdriver always delivers constant rotation speed and fastening force even for demanding fastening process (self-tapping tightening, soft joint....)
- Comfort : Light weight and compact
- Durability : Built-in Over heat and Over Current protection prevent the screwdriver from damage or bad use
- Economy : Maintenance free
- Quality : Easy monitoring of your fastenings thanks to torque reached signal output, start and stop signal outputs, selectable softstart, Double-hit mode for soft joint, Screwdriver lock signal input for PLC (prevents screwdrivers activation until PLC input signal).

Model	Power (AC) (V)	Output voltage low (V)	Output voltage high (V)	Rated output (A)	Max. output (A)	Weight (Kg)	Size (mm)	For screwdrivers	Code
XT-30D	220	20	30	1,2	2	0,33	70x130x40	GA Series	6-1040062
XS-38D V4.3*	220	30 20	38 30	2,5	5	0,7	90x150x55	DO Series GA Series	6-1040063



# Controllers

- High productivity : Thanks to the unique SMPS technology (switching modulation), the connected screwdriver always delivers constant rotation speed and fastening force even for demanding fastening process (self-tapping tightening, soft joint....).
- Comfort : Light and compact.
- Durability : Built-in Over heat and Over Current protection prevent the screwdriver from damage or bad use.
- Economy : Maintenance free.
- Quality : Easy monitoring of your fastenings thanks to torque reached signal output, start and stop signal outputs, selectable softstart, Screwdriver lock signal input for PLC (prevents screwdrivers activation until PLC input signal).



Model	Power (AC) V	Output voltage	Rated output	Weight (Kg)	Size (mm)	For Screwdrivers	Code
XS-35D	220	35	4	1,2	130x188x65	GX... BT series	6-1077420

## XT-35D Advanced controller features

- Auto recognition of the screwdrivers
- Password protection
- Forward and Reverse Speed selectable
- Soft start for Forward and Reverse mode (from 30 to 200 Ms)
- Programmable angle
- Multi hit function for soft joint (from 1 to 10 shut off clutch)
- Multi sequence programm (as GXT model)
- Various Display Settings
- I/O interface
- RJ input for Scout II poka yoke Controller, Posi Control



Model	Power (AC) V	Output voltage	Rated output	Weight (Kg)	Size (mm)	For Screwdrivers	Code
XT-35D	230	35	4	2,4	95x221x143	GY... series GY... P series PGY... series	6-1077421

# SCOUT Poka Yoke

## SCOUT Poka yoke controller (Suitable with XS-38D, XS-38D FA, XS-40D, XS-35D, XT-35D)

**Prevents screw fastening errors!  
Supervised process!**



Set up to 8 tightening programs

Tightening monitoring :

- Detects cross threading, omissions, double tightening, unfinished rundown.
- Screws counting, OK-NG fastening, OK-NG cycle.
- Buzzer Alert, displays error conditions.

Sequence management :

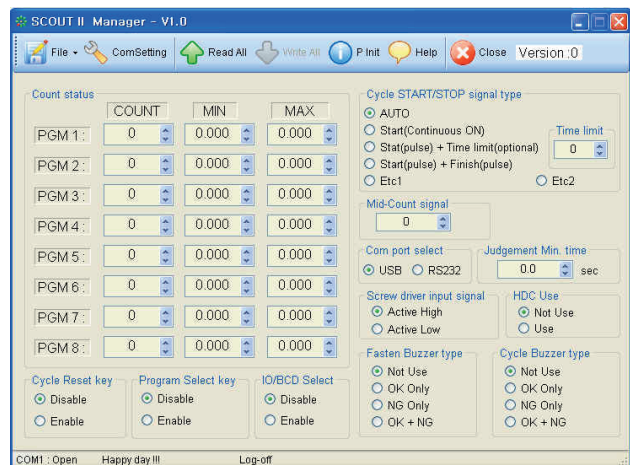
- Parts detection, parts OK-NG sorting through PLC.
- Storage of several tightening settings with the parameter mode.

Model	Key features	Inputs features	Outputs features	Code
SCOUT II	<ul style="list-style-type: none"> <li>&gt; Password protection</li> <li>&gt; Display of total fastened screw number</li> <li>&gt; Display of remaining screw number</li> <li>&gt; Built-in fastening time measurement function</li> <li>&gt; Alarms: leds + several buzzers</li> <li>&gt; Easy programming by scroll menu and self learning mode</li> <li>&gt; Wall mountable</li> </ul>	<ul style="list-style-type: none"> <li>&gt; Cycle start</li> <li>&gt; Driver lock/unlock</li> </ul>	<ul style="list-style-type: none"> <li>&gt; OK</li> <li>&gt; NG</li> <li>&gt; Buzzer alarm</li> <li>&gt; Cycle end</li> </ul>	<b>6-1074000</b>

Delivered with :

- Connection cable on controller
- I/O connection cable

**Easy programming thanks  
to the Scout II manager  
software !**





8, avenue Gutenberg - CS 50510  
78317 Maurepas Cedex - France  
Tél. : +33 1 30 66 41 20 • Fax : + 33 1 30 66 41 79  
[export@doga.fr](mailto:export@doga.fr)



Nous travaillons constamment à l'amélioration de nos produits. De ce fait, les dimensions et indications portées dans cette brochure peuvent parfois ne pas correspondre aux dernières exécutions. De convention expresse, nos ventes sont faites sous bénéfice de réserve de propriété (les dispositions de la loi du 12/5/80 trouvent donc toute leur application).